

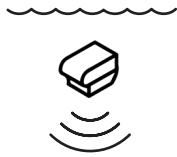


KONSGBERG

FLEXVIEW

Multibeam Sonar





FLEXVIEW MULTIBEAM SONAR

for observation-class ROVs

Delivering superior image quality and coverage, the Flexview sonar provides high-quality, distortion-free images at a range of up to 200 m over a 140° sector, reducing the time it takes to search for and locate targets.

The Flexview's removable transducer is the first of its kind, offering field replacement of a damaged transducer in the unlikely event of a catastrophic impact. It also allows for potential new transducer configurations to be exchanged in the future, depending on the job being performed.

The Flexview is compatible with third-party software such as Echoview, SAMM from OIC, and EIVA's Mobula.

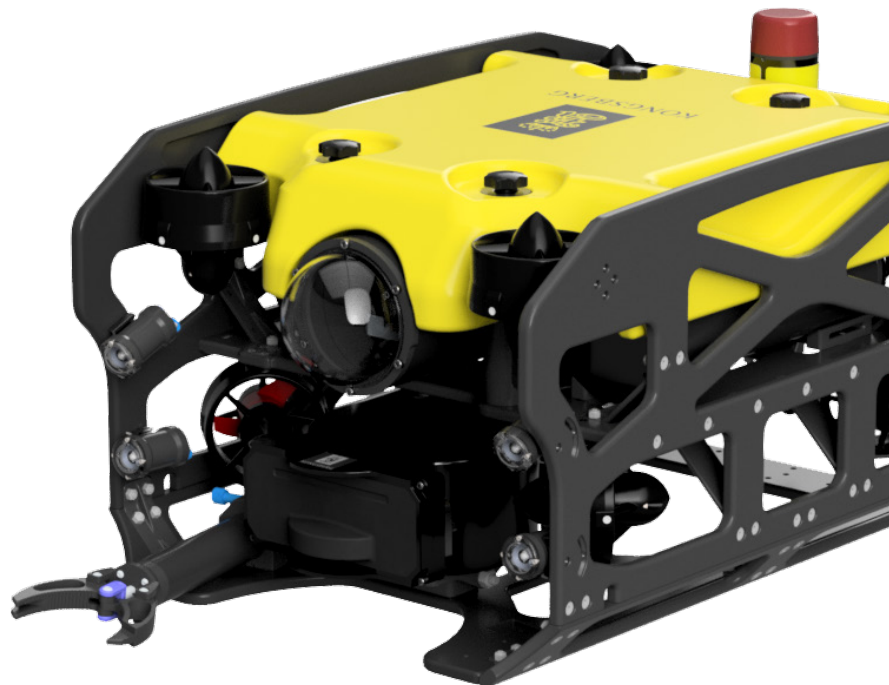


“The Flexview is the best sonar I have ever used.”

Mark Salter
ROV Pilot

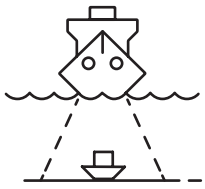
FEATURES

- Ideally suited for small observation-class ROVs
- Can also be deployed on a Pole Mount
- Distortion-free images at a high update rate
- High-resolution images at long range
- Up to 200 m coverage over a 140° sector, reducing the time it takes to search for and locate targets
- Removable transducer for rapid field replacement
- Low-profile wet mateable connector
- Intuitive and simple-to-use software



APPLICATIONS

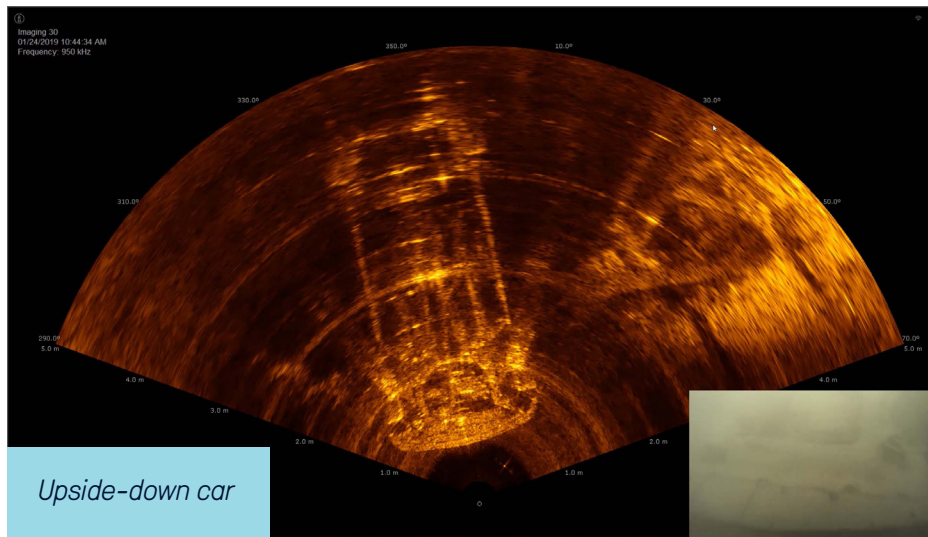
Search and Recovery



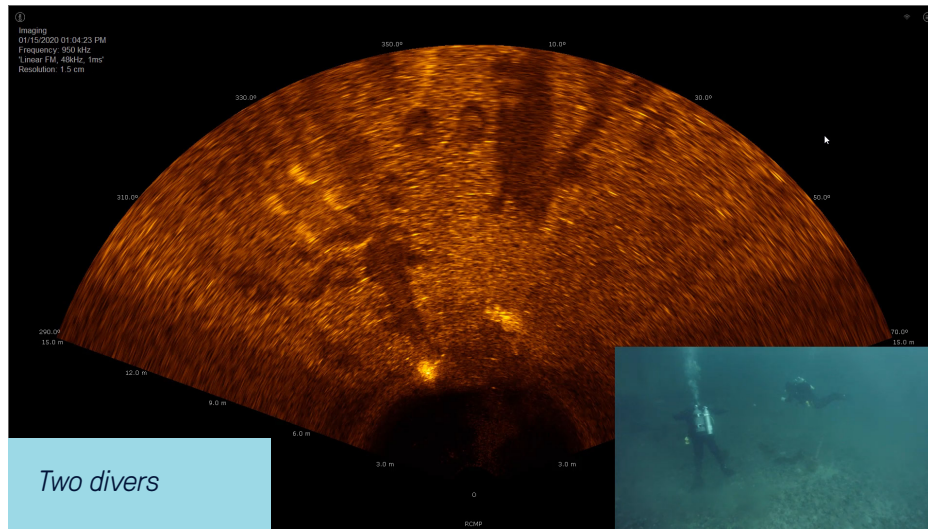
The Flexview is ideally suited for search and recovery teams using small ROVs.

The Flexview on an ROV allows the operator to locate and identify targets, reducing the time a diver needs to be in the water. For diver safety, the Flexview can also monitor the diver's position during a recovery. Divers can be directed to the target through the diver comms.

The multifrequency capability of the Flexview provides long-range detection with medium and short-range high-resolution target confirmation. The wide vertical beam delivers greater coverage than other manufacturers, making it easier to see targets.

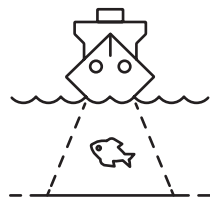


Upside-down car



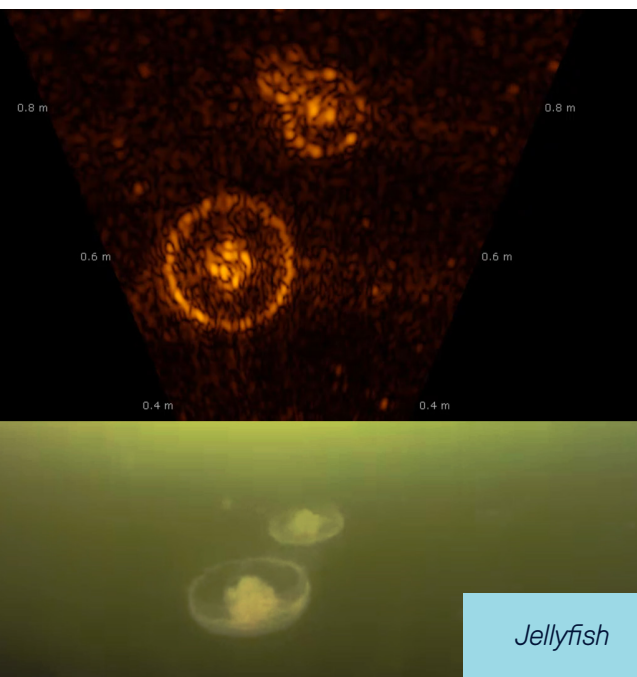
Two divers

Ocean Science



Kongsberg provides acoustics-acquisition tools to markets which require high-quality instruments, giving the customer the ability to monitor and measure conditions in both marine and freshwater environments.

The Flexview mounted on an ROV or ASV has many advantages, including wide-swath coverage, long-range detection, and medium to short-range target identification. The operator can also use the ROV's camera to confirm and identify targets acquired by Flexview. The operator station displays data in real-time for immediate results.



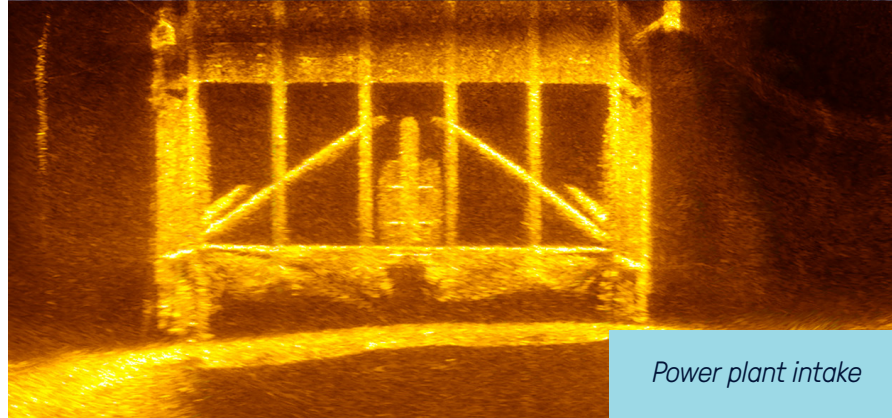
Jellyfish

Infrastructure Inspection

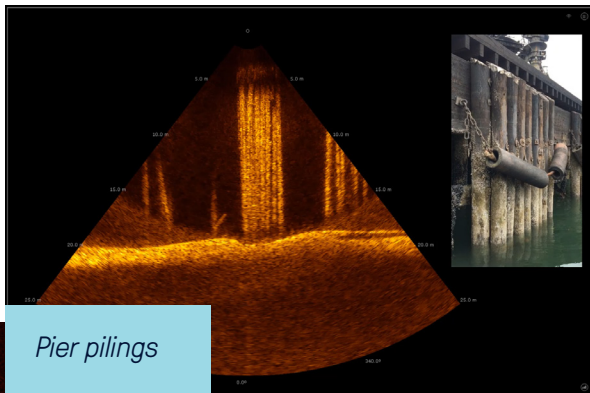


Underwater inspection of man-made structures is vital as they age. In addition, water currents, corrosion, and damage from storms and vessels may impact structure integrity. Diver inspections can be costly and dangerous due to a lack of visibility. Inconsistencies in data reporting are also common.

The Flexview on an ROV provides high-definition images, and the compact size and portability of the equipment enables quick, frequent monitoring.



Power plant intake



Pier pilings

